

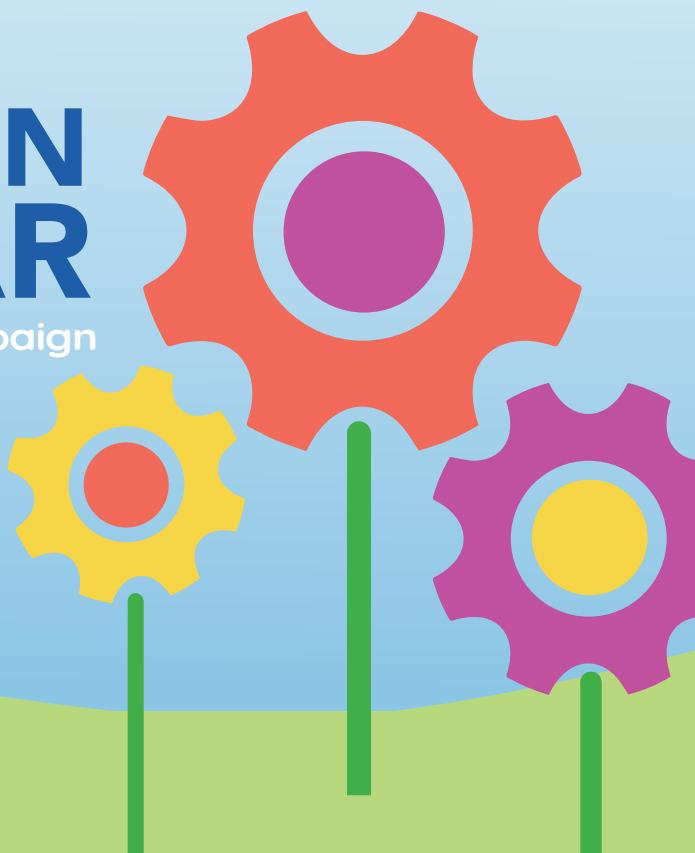
Educate | Engage | Inspire

KIDS CAN

COMMUNITY CENTER

GET IN GEAR

Capital Campaign





S.S. playschool is learning place

August 1, 1934



"You kissed him?" said laughing face. "I did not kiss him; I did not kiss him face." Summer playschool at 31st & Q St. is the Social Settlement Association of Omaha, 42nd Q St. is the kind of place where eight-year-olds having a crash on a high school volunteer.

"Summer playschool is supposed to be fun, so we don't force anything on the children. Enjoy life," Mrs. Knapp said. "That's what it's all about."

Mrs. Knapp, 1204 Hickory St., is completing her 32nd year as executive director of Social Settlement. The 35 children (between the ages of five and 12) attending playschool will have a program for parents and friends Friday at 7:30 p.m. The program will mark the conclusion of the six-week session for the year.

Children have spent part of the summer playschool preparing group songs for the program. The playschool is just for fun.

"Who's a turtle?" This is the most frequently asked question among five-year-olds.

Having recently learned many children found a new home in the animal paper.

off the street. They are able to work with the children in a relaxed atmosphere," Mrs. Knapp said.

In another room, six-year-olds were clipping magazine pictures and constructing collages while listening to music. And in another room, older girls (age 10) were planning a pet show and painting paper mache eggs and flowers.

It is no accident that many Social Settlement activities are remarkable movements in a variety of dance.

At some point during the day, most girls take ballet lessons in the gym. Volunteer instructor Sarah Buckman teaches both steps and complete dances to music.

"I have the younger girls design animals," she said. "Summer playschool is arts and crafts, socializing and ballet. And it is more."

"We have seven steps, age now to 12, who study faults and rocks in the area. We sometimes say the program ends at age 12 but we let 11 and 12-year-olds continue if they are having fun," Mrs. Knapp said.

The work room for the older girls consists of six work benches crowded into a lower-level room. All the benches are with rock candy side.

and nursery or preschool, 10:15 to 11:30 a.m. Monday through Thursday. Aug. 25, Oct. 25.

AWAY ON VACATION

August are Betty Knapp, Ruth Butler, Constance Gilson, Gail Holmes and Dick Knapp.

Lillian Leimbach broke her perfect attendance record at 31st & Q St. by flying off to California to see her new grandson, Eric Michael at Oxnard.

Meanwhile, Sig's Stitches and the record straight race and her all — Elaine Sorenson, who was part of the good crew floating over the entrance at Henry County Zoo.

Steve Leimbach, who self-styled as a volunteer again, has been an outstanding volunteer with the record straight race in this year, helping with handling many extra chores.

"We have a lot of great volunteers this year, and we certainly appreciate their efforts," said Executive Director Gladys Knapp.

CONTINUED

From the CEO



It is 1958 and a young boy opens up his birthday presents and realizes he has enough money to go to his favorite place. First chance he gets, he heads to the South Omaha Social Settlement House, pays for an annual membership and spends the rest of the afternoon in the playroom. He never missed an afternoon at his neighborhood center.

Those are the types of stories that come with over a century of serving our community. Founded in 1908 as Social Settlement Association, our programs changed with the times, but always with a focus on children and families. In 1964, we moved into a newly constructed building at 49th and Q, providing a variety of services throughout the decades. The organization was rebranded to Kids Can Community Center in 2009 to better reflect our mission to educate, engage and inspire children through early childhood care and out-of-school experiences.

Now it is time for the next chapter of this organization. I am proud to announce our capital campaign for a brand new building that will double our capacity and improve the quality and depth of our programs.

I ask you to join us and Get In Gear as we build the future for our kids and the many generations to come!

Robert Patterson
Chief Executive Officer
Kids Can Community Center

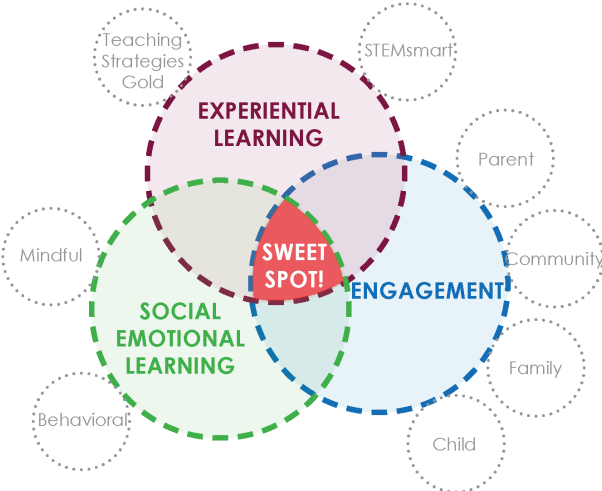


CORE OBJECTIVES & CAPACITY

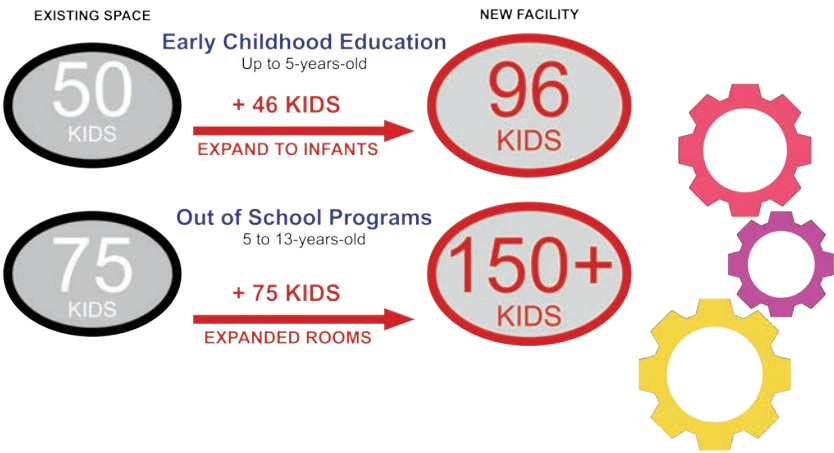
At Kids Can Community Center, our mission is to educate, engage and inspire children through early childhood care and out-of-school experiences.

We operate two core programs to support student academic success: Early Childhood and Out-of-School Education. Many of our parents often work multiple jobs while trying to complete their own education and are sometimes put in a situation of having to choose between basic needs and stable childcare solutions.

Kids Can identified three core learning objectives for programs: experiential learning, engagement, and social emotional learning.



Our goal is to double our capacity of our current building for on-site programming.



CURRENT BUILDING

4860 Q STREET OMAHA NE

Year Built: 1963

Square Footage: 13,800 SF

Max Capacity: 125 kids at any one time



LOWER LEVEL



FIRST FLOOR

Current Facility Restrictions:

- Block wall construction makes floor plate reconfiguration structurally difficult and costly
- Two-story building with no elevator
- Does not fulfill ADA requirements
- No spectator space within gymnasium
- Shared hallways with community programs
- Limited and small Out-Of-School rooms
- Inability to expand Early Childhood spaces
- Windows are higher than a child's eye level
- No direct corridor access to playground
- Mechanical, electrical, and plumbing system upgrades are needed

NEW LOCATION

4768 Q STREET OMAHA NE

The future is right around the corner! We love our neighborhood, but our current space limited our growth. We were fortunate to find the right spot just a block away. Previously owned by Omaha Public Schools and the former site of Ashland Park Elementary, Kids Can purchased the land in 2019 to make way for a new facility.



EXTERIOR SKETCHES



CHARACTERISTICS OF NEW SITE:

Allows for continuity of services at current facility during construction

Larger site allows for future building addition opportunities

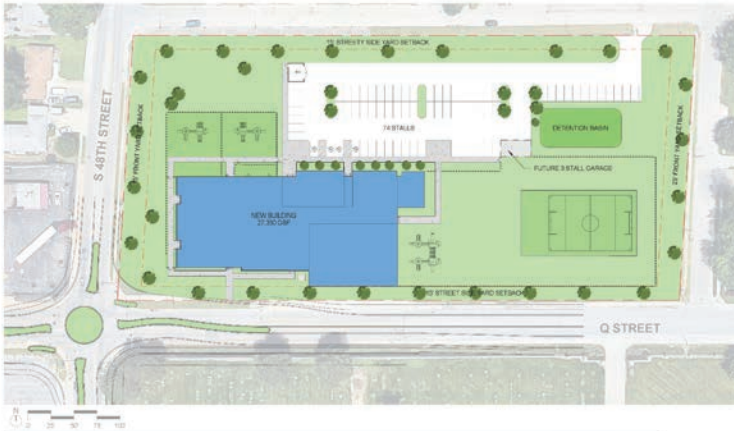
Higher viability at the corner of 48th and Q Streets allows
for better exposure and recognition within the community

Site Acreage: 3.7 acres

Current Zoning: R-4 (special permit
approved for new center)



CONCEPTUAL DESIGN



CHARACTERISTICS OF NEW LAYOUT:

Early Childhood and Out Of School areas are placed in separate wings with flexible community spaces in-between

~27,000 square footage with area set aside for future additions for both wings

Gymnasium is built into hillside to reduce scale of the large volume of space and also provides an opportunity for signage along Q Street

Potential recreational greenspace for youth sports

Building footprint holds the corner of 48th and Q Streets to respect the scale of the neighborhood



Conceptual designs provided by Holland Basham Architects.

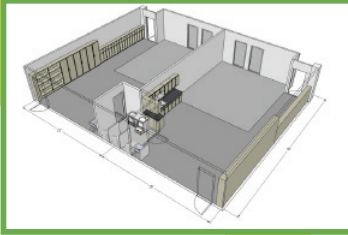
SAMPLE PROGRAM ROOMS

EARLY CHILDHOOD EDUCATION

- **Preschool Classrooms**
- Pre-Kindergarten Classrooms
- Infant Classrooms
- Indoor Gross Motor Play Space

Characteristics:

- 25'x40'
- 1,000 net square feet
- Combined restroom
- Snack prep area
- Transparency to exterior
- Convenient storage



OUT OF SCHOOL

- **STEM Room**
- Strength / Music / Literacy
- Learning Room
- Mentoring Zones

Characteristics:

- 40'x60'
- 2,400 net square feet
- Flexibility!
- Project Room adjacency
- Abundance of Power / AV
- Tall ceiling height

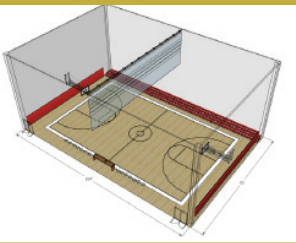


COMMUNITY

- **Gymnasium**
- Cafeteria
- Community Room
- Lobby Space

Characteristics:

- 104'x70'
- 7,280 net square feet
- Multi-functional space
- Storage adjacency
- Community access
- Spectator seating



IT'S TIME TO GET IN GEAR!

The future is literally right around the corner! Our new center is just one block east of our current building, keeping our new home in the neighborhood we love. The new center will foster an environment truly suited to the needs of the families we serve, including an innovative STEM room, greater classroom and community capacity, and infant childcare for the first time in our history. This *Get In Gear* Capital Campaign is a collective investment in the future of our students and the deeply needed services to their families: accessible, affordable and quality Early Education and Out Of School programming.

As we *Get In Gear* to construct a new Kids Can Community Center, we thank you for consideration of support. Your donation will be prominently placed on a recognition wall consisting of gears working together. It will be a fun and interactive art installation for our kids with your name on a gear. Join us in showing our students how working together creates a fun and bright future for each child, our community center and all of Omaha.

Contact Cliff McEvoy at 402.731.6988 or cmcevoy@kidscan.org or visit <https://kidscan.org/capital.html> make your donation today.



Donor wall concept courtesy of Kentucky Science Center.

Capital Can Doer Level

- VIP Event Invitation
- Custom-framed art piece by Kids Can student
- Individual Gear

Recognition on Donor Wall

- Grand Opening Invitation
- Listing in Annual Report
- Online acknowledgment
- Recognition in Grand Opening materials

\$50,000+

Inspirer Level

- Custom-framed art piece by Kids Can student
- Individual Gear

Recognition on Donor Wall

- Grand Opening Invitation
- Listing in Annual Report
- Online acknowledgment
- Recognition in Grand Opening materials

\$25,000+

Engager Level

- Individual Gear
- Recognition on Donor Wall
- Grand Opening Invitation
 - Listing in Annual Report
 - Online acknowledgment
 - Recognition in Grand Opening materials

\$10,000+

Educator Level

- Grand Opening Invitation
- General Donor Wall Recognition
- Listing in Annual Report
- Online acknowledgment
- Recognition in Grand Opening materials

\$5,000+

Connector Level

- General Donor Wall Recognition
- Listing in Annual Report
- Online acknowledgment
- Recognition in Grand Opening materials

\$1,500+

KIDS CAN

COMMUNITY CENTER

Special thanks to our lead foundation supporters:

The Lozier Foundation
William & Ruth Scott Family Foundation
Sherwood Foundation
Weitz Family Foundation
Mutual of Omaha Foundation
Peter Kiewit Foundation
Mammel Foundation
Suzanne & Walter Scott Foundation
The Hawks Foundation
Union Pacific Foundation
FNBO

Special thanks to our lead individual supporters:

Avi Atholi	Preston Love Jr.
Omar Correa	Colette McCann
Linda & Tim Daugherty	Scott Moulton
Krista Eckhoff	Lindsay Neemann
Michelle Eppler	Gina Ponce
Jane Franklin	Diana Prauner
Jessica Hollister	Marcos Rodriguez
Brad Hove	Julia Westerfield
Laura & Ajoy Jana	Kim & Bob Whitehouse
Angie Kelso	Carol Williams
Rebecca Kleine	

updated February 2021