

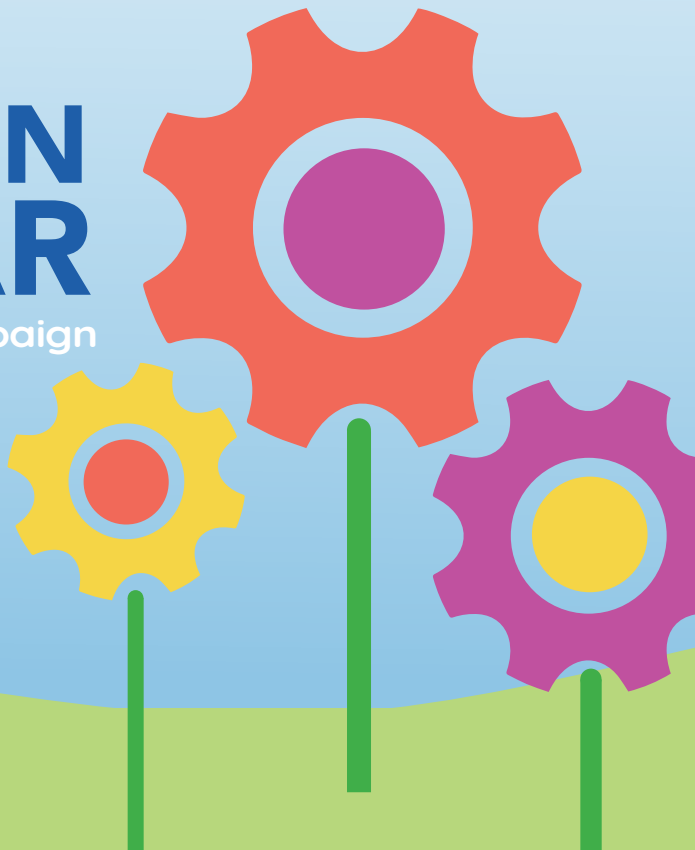
Educate | Engage | Inspire

# KIDS CAN

COMMUNITY CENTER

## GET IN GEAR

Capital Campaign





# S.S. playschool is learning place

August 1, 1934

"You kissed him?" said laughing face and kiss him; I did not," cried red face. Summer playschool at 31st & Q St. is the kind of place where eight-year-old girls can giggle about school volunteer. High school volunteer. "Summer playschool is supposed to be fun, so we don't force anything on the children. Enjoy life," Mrs. Knapp said. "Who's all about?" Mrs. Knapp, 1204 Hickory St., is completing her second year as executive director of Social Settlement. The 45 children (between the ages of five and 12) at the playschool will host a program for parents and friends Friday at 7:30 p.m. The program will mark the conclusion of the six-year session for the playschool. Children of the summer are preparing group songs for the "Who's a turtle?" This is one of the most frequently asked questions among five-year-olds. Having recently toured many children found in the animals' home

of the street. They are able to work with the children in a relaxed atmosphere," Mrs. Knapp said. In another room, six-year-olds were clipping magazine pictures and constructing collages while listening to music. And in another room, older girls (age 10) were planning a pet show and painting paper macie saes and flowers. It is no accident that many Social Settlement activities resemble movements in a symphony or dance. At some point during the day, most girls take ballet lessons in the gym. Volunteer instructor Sarah Burkman teaches both steps and complete dances set to music. "I have the younger girls design dances to portray different animals," she said. Summer playschool is arts and crafts, socializing, and ballet. And it is more.

"We have several boys, age nine to 12, who study fossils and rocks in the area. We sometimes say the program ends at age 10, but we let it continue if the children are having fun," Mrs. Knapp said. The work room for the older group consisted of six work benches crowded into a lower-level room. All the benches were furnished with rock samples.

and nursery of preschool hours: 9 to 11:30 a.m. Monday through Thursday. **AWAY ON VACATION** August are Betty Knapp, Rich Butler, Constance Gibson, Gail Holmes and Dick Knapp. Lilian Leimbach broke her perfect attendance record at Slip by flying off to California to see her new grandson Eric Michael at Oxnard. Meanwhile, Slip's Stitches set the record straight once and for all - Elsie Stassen, who was part of the good crew suffering on the entrance at Henry Dourly Zoo. Steve Leimbach, self-styled girl watcher, has been an outstanding volunteer again this year, helping with Jamboree supervision and handling many extra chores. "We have a lot of great volunteers this year, and we certainly appreciate their efforts," said Executive Director Gladys Knapp.

## CONTINUED

**SETTLEMENTS** JULY Jamboree ended Friday with songs, skills and displays of the four-week study done by 20 youngsters aged five to 13. The program and open house Friday morning trip was saw youngsters picnicking at Hawthorn Park, visiting the Dourly Zoo, Boy Town, the Fremble Forest, and the Sump Farm and fishing at the Sump Farm. A four-month study, a tour of Yakovitch, a four-pound catfish. Volunteer drivers of the week for July Jamboree were Wayne Yanovich and John E. Nicholowski. Vice

# From the CEO



It is 1958 and a young boy opens up his birthday presents and realizes he has enough money to go to his favorite place. First chance he gets, he heads to the South Omaha Social Settlement House, pays for an annual membership and spends the rest of the afternoon in the playroom. He never missed an afternoon at his neighborhood center.

Those are the types of stories that come with over a century of serving our community. Founded in 1908 as Social Settlement Association, our programs changed with the times, but always with a focus on children and families. In 1964, we moved into a newly constructed building at 49th and Q, providing a variety of services throughout the decades. The organization was rebranded to Kids Can Community Center in 2009 to better reflect our mission to educate, engage and inspire children through early childhood care and out-of-school experiences.

Now it is time for the next chapter of this organization. I am proud to announce our capital campaign for a brand new building that will double our capacity and improve the quality and depth of our programs.

I ask you to join us and Get In Gear as we build the future for our kids and the many generations to come!

Robert Patterson  
Chief Executive Officer  
Kids Can Community Center

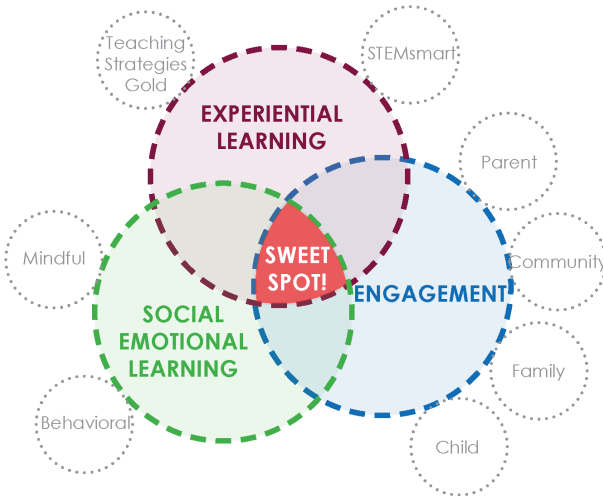


# CORE OBJECTIVES & CAPACITY

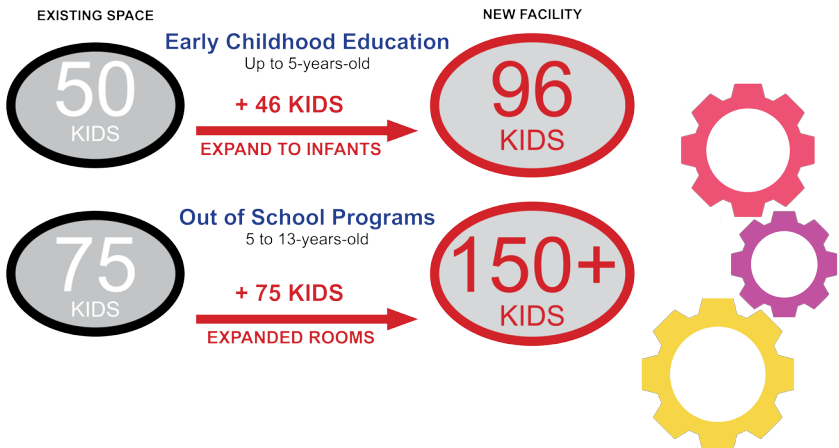
At Kids Can Community Center, our mission is to educate, engage and inspire children through early childhood care and out-of-school experiences.

We operate two core programs to support student academic success: Early Childhood and Out-of-School Education. Many of our parents often work multiple jobs while trying to complete their own education and are sometimes put in a situation of having to choose between basic needs and stable childcare solutions.

Kids Can identified three core learning objectives for programs: experiential learning, engagement, and social emotional learning.



Our goal is to double our capacity of our current building for on-site programming.







# NEW LOCATION

4768 Q STREET OMAHA NE

The future is right around the corner! We love our neighborhood, but our current space limited our growth. We were fortunate to find the right spot just a block away. Previously owned by Omaha Public Schools and the former site of Ashland Park Elementary, Kids Can purchased the land in 2019 to make way for a new facility.



# DESIGN



## CHARACTERISTICS OF NEW SITE:

Allows for continuity of services at current facility during construction

Larger site allows for future building addition opportunities

Higher visibility at the corner of 48th and Q Streets allows for better exposure and recognition within the community

Site Acreage: 3.7 acres

Current Zoning: R-4 (special permit approved for new center)







# SAMPLE PROGRAM ROOMS

## EARLY CHILDHOOD EDUCATION

- **Preschool Classrooms**
- Pre-Kindergarten Classrooms
- Infant Classrooms
- Indoor Gross Motor Play Space

### Characteristics:

- 25'x40'
- 1,000 net square feet
- Combined restroom
- Snack prep area
- Transparency to exterior
- Convenient storage



## OUT OF SCHOOL

- **STEM Room**
- Strength / Music / Literacy
- Learning Room
- Mentoring Zones

### Characteristics:

- 40'x60'
- 2,400 net square feet
- Flexibility!
- Project Room adjacency
- Abundance of Power / AV
- Tall ceiling height

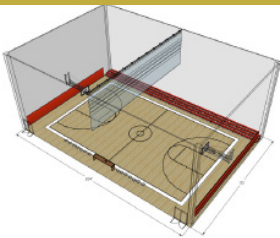


## COMMUNITY

- **Gymnasium**
- Cafeteria
- Community Room
- Lobby Space

### Characteristics:

- 104'x70'
- 7,280 net square feet
- Multi-functional space
- Storage adjacency
- Community access
- Spectator seating



# IT'S TIME TO GET IN GEAR!

The future is literally right around the corner! Our new center is just one block east of our current building, keeping our new home in the neighborhood we love. The new center will foster an environment truly suited to the needs of the families we serve, including an innovative STEM room, greater classroom and community capacity, and infant childcare for the first time in our history. This **Get In Gear** Capital Campaign is a collective investment in the future of our students and the deeply needed services to their families: accessible, affordable and quality Early Education and Out Of School programming.

As we **Get In Gear** to construct a new Kids Can Community Center, we thank you for consideration of support. Your donation will be prominently placed on a recognition wall consisting of gears working together. It will be a fun and interactive art installation for our kids with your name on a gear. Join us in showing our students how working together creates a fun and bright future for each child, our community center and all of Omaha.

Contact **Cliff McEvoy** at **402.731.6988** or **cmcevoy@kidscan.org** or visit <https://kidscan.org/capital.html> make your donation today.



*Donor wall concept courtesy of Kentucky Science Center.*

## Capital Can Doer Level

- VIP Event Invitation
  - Custom-framed art piece by Kids Can student
    - Individual Gear
- Recognition on Donor Wall
- Grand Opening Invitation
  - Listing in Annual Report
  - Online acknowledgment
  - Recognition in Grand Opening materials

**\$50,000+**

## Inspirer Level

- Custom-framed art piece by Kids Can student
    - Individual Gear
- Recognition on Donor Wall
- Grand Opening Invitation
  - Listing in Annual Report
  - Online acknowledgment
  - Recognition in Grand Opening materials

**\$25,000+**

## Engager Level

- Individual Gear
- Recognition on Donor Wall
- Grand Opening Invitation
  - Listing in Annual Report
  - Online acknowledgment
  - Recognition in Grand Opening materials

**\$10,000+**

## Educator Level

- Grand Opening Invitation
- General Donor Wall Recognition
- Listing in Annual Report
- Online acknowledgment
- Recognition in Grand Opening materials

**\$5,000+**

## Connector Level

- General Donor Wall Recognition
- Listing in Annual Report
- Online acknowledgment
- Recognition in Grand Opening materials

**\$1,500+**

# KIDS CAN

COMMUNITY CENTER

